



**REGIONAL SPECIALISED METEOROLOGICAL CENTRE-TROPICAL CYCLONES, NEW DELHI  
TROPICAL WEATHER OUTLOOK**

**DEMS-RSMC SPECIAL TROPICAL CYCLONES NEW DELHI DATED 21.11.2021**

**TROPICAL WEATHER OUTLOOK FOR NORTH INDIAN OCEAN (THE BAY OF BENGAL AND ARABIAN SEA) VALID FOR NEXT 120 HOURS ISSUED AT 0600 UTC OF 21.11.2021 BASED ON 0300 UTC OF 21.11.2021.**

**BAY OF BENGAL:**

A CYCLONIC CIRCULATION LAY OVER SOUTH ANDAMAN SEA & NEIGHBOURHOOD AT 0300 UTC OF TODAY, THE 21<sup>ST</sup> NOVEMBER AND EXTENDED UPTO 3.1 KM ABOVE MEAN SEA LEVEL.

SCATTERED LOW AND MEDIUM CLOUDS WITH EMBEDDED MODERATE TO INTENSE CONVECTION LAY OVER CENTRAL & SOUTH BAY OF BENGAL AND SOUTH ANDAMAN SEA.

**PROBABILITY OF CYCLOGENESIS (FORMATION OF DEPRESSION) DURING NEXT 120 HRS:**

24 HOURS	24-48 HOURS	48-72 HOURS	72-96 HOURS	96-120 HOURS
NIL	NIL	NIL	NIL	NIL

**ARABIAN SEA:**

**SUB: WELL MARKED LOW PRESSURE AREA OVER EASTCENTRAL ARABIAN SEA**

THE WELL MARKED LOW PRESSURE AREA OVER EASTCENTRAL ARABIAN SEA MOVED GRADUALLY WEST-SOUTHWESTWARDS AND PERSISTED OVER THE SAME REGION AT 0300 UTC OF TODAY, THE 21<sup>ST</sup> NOVEMBER. IT IS LIKELY TO MOVE FURTHER WEST-SOUTHWESTWARDS DURING NEXT 2-3 DAYS AND WEAKEN GRADUALLY.

AS PER SATELLITE IMAGERY AT 0300 UTC, INTENSITY OF THE SYSTEM IS CHARACTERIZED AS T 1.0. VORTEX IS CENTERED NEAR 13.5N/67.3E. ASSOCIATED BROKEN LOW AND MEDIUM CLOUDS WITH EMBEDDED INTENSE TO VERY INTENSE CONVECTION LAY OVER EASTCENTRAL ARABIAN SEA BETWEEN LATITUDE 11.0N & 16.0N AND LONGITUDE 63.0E & 69.0E. MINIMUM CLOUD TOP TEMPERATURE (CTT) IS SAME DURING PAST 24 HOURS AND IS AROUND MINUS 93°C. THE ASSOCIATED CONVECTION HAS INCREASED DURING PAST 06 HOURS.

SEA CONDITION WILL BE ROUGH TO VERY ROUGH OVER CENTRAL ARABIAN SEA DURING NEXT 24 HOURS AND OVER SOUTHWEST ARABIAN SEA DURING SUBSEQUENT 24 HOURS.

**PROBABILITY OF CYCLOGENESIS (FORMATION OF DEPRESSION) DURING NEXT 120 HRS:**

24 HOURS	24-48 HOURS	48-72 HOURS	72-96 HOURS	96-120 HOURS
NIL	NIL	NIL	NIL	NIL

**REMARKS:**

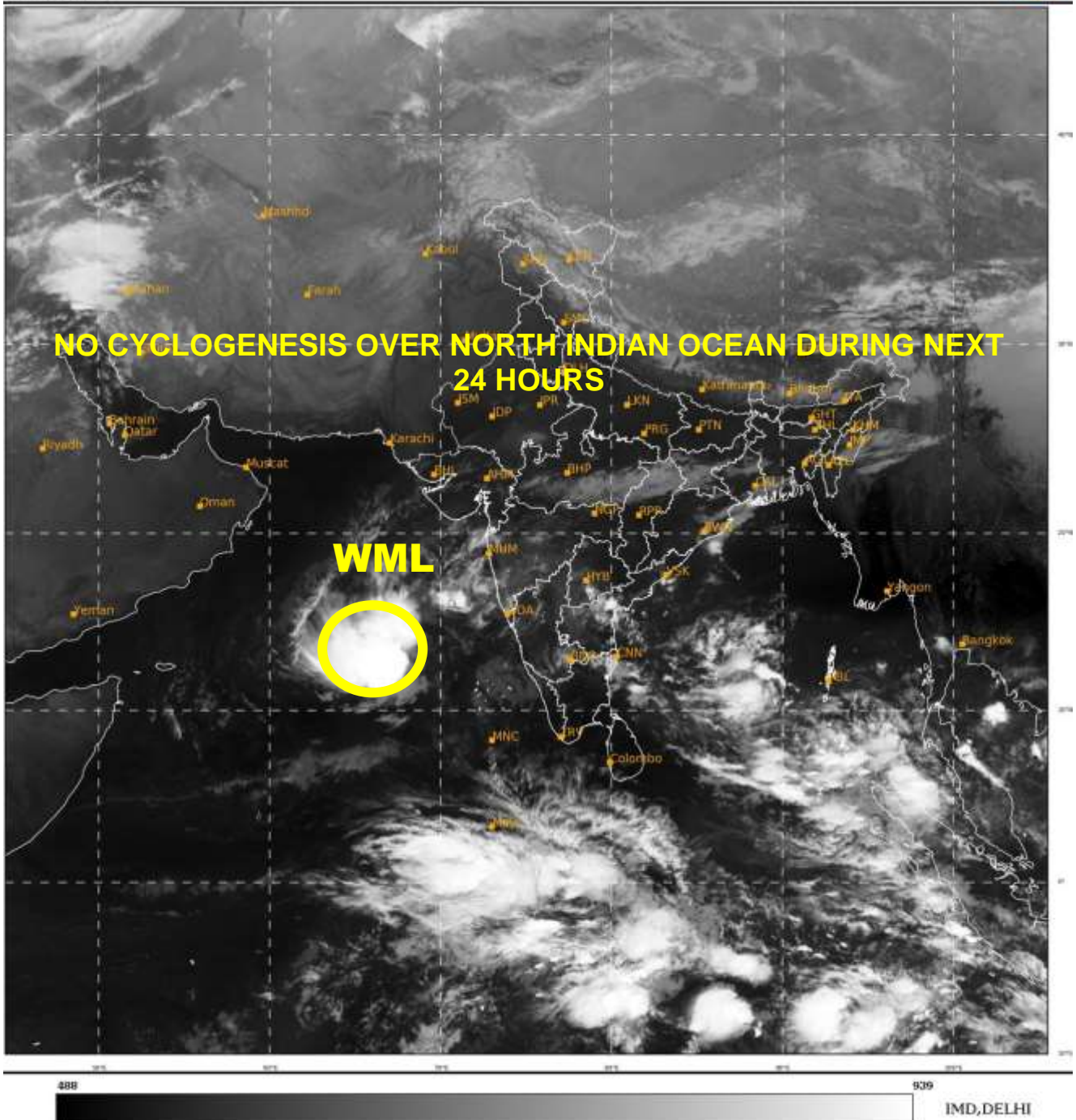
SEA SURFACE TEMPERATURE (SST) IS ABOUT 28-29°C OVER EASTCENTRAL ARABIAN SEA, BECOMING <28°C OVER WESTERN PARTS OF THE ARABIAN SEA. TROPICAL CYCLONE HEAT POTENTIAL (TCHP) IS ABOUT 60-80 KJ/CM<sup>2</sup> OVER EASTCENTRAL ARABIAN SEA AND IS DECREASING TOWARDS WESTERN PARTS OF ARABIAN SEA. POSITIVE LOW LEVEL VORTICITY

HAS DECREASED SIGNIFICANTLY DURING PAST 24 HOURS AND IS ABOUT  $50 \times 10^{-6} \text{ S}^{-1}$  OVER EASTCENTRAL ARABIAN SEA TO THE SOUTHWEST OF SYSTEM CENTRE WITH VERTICAL EXTENSION UPTO 500 HPA LEVEL. POSITIVE LOW LEVEL CONVERGENCE IS THE SAME DURING PAST 24 HOURS AND IS ABOUT  $10 \times 10^{-5} \text{ S}^{-1}$  TO THE NORTHWEST OF SYSTEM CENTRE. POSITIVE UPPER LEVEL DIVERGENCE HAS INCREASED IN PAST 24 HOURS AND IS ABOUT  $10 \times 10^{-5} \text{ S}^{-1}$  OVER SYSTEM CENTRE AND IS ALSO EXTENDING TO IT'S WEST. WIND SHEAR IS LOW TO MODERATE (15-20 KT) OVER EASTCENTRAL ARABIAN SEA OVER THE SYSTEM AREA. IT IS GRADUALLY INCREASING OVER AREAS TO THE SOUTHWEST OF SYSTEM CENTRE. DEEP LAYER MEAN WIND FLOW IS INDICATING THAT THE SYSTEM HAS MOVED OUT OF THE COL REGION AND WOULD NOW MOVE WEST-SOUTHWESTWARDS.

MOST OF THE MODELS ARE INDICATING VERY SLOW WEST-SOUTHWESTWARD MOVEMENT OF THE SYSTEM DURING NEXT 2-3 DAYS TOWARDS SOUTHWEST ARABIAN SEA OFF SOMALIA COAST.

**UNDER THESE CONDITIONS, THE WELL MARKED LOW PRESSURE AREA OVER EASTCENTRAL ARABIAN SEA WOULD MOVE WEST-SOUTHWESTWARDS DURING NEXT 2-3 DAYS AND WEAKEN GRDUALY.**

NEXT MESSAGE WILL BE ISSUED AT 0600 UTC OF 22<sup>ND</sup> NOVEMBER, 2021.



**WML: WELL MARKED LOW PRESSURE AREA**